

Patterninator Manual

Connecting to a Sign

Once the program is installed, it will appear in the **Start Menu** (Windows 7) or **All Apps** (Windows 8). Locate or search for Patterninator and click to open. The program will run as a small window with a field for the sign's IP address.



Image A

The default IP Address is 127.0.0.1 (*see image A*). This is known as the Loopback IP, which refers to the IP of the native device running Patterninator. Run the program on the Loopback IP **if and only if** the computer running Patterninator is integrated directly with the sign.

If the computer running Patterninator is not integrated with the sign (e.g. connected through a wireless network), replace the Loopback ID in the text box with the sign's IP address and port number.

IP Address and Port Number should be separated by a colon. Below is an example of an IP Address and Port Number:

192.169.0.1:9762

The default port number for primary computers is **9762**. If you do not know the IP or Port Number, *see Sign IP Discovery Document (in development)*.

A successful connection will result in the **Successfully connected to sign** message appearing at the bottom of the window.

Testing a Sign

Once connected to a sign, select a test pattern to display the corresponding color on the sign. Current patterns are Red, Blue, Green, White, and Black.

To test a cabinet individually, click the **Choose Cabinets** drop-down menu. Patterninator will display the number of cabinets in a grid based on the number of cabinets in the sign (*see image B*).

Click the panel you wish to test. It will display the test pattern currently selected, while the remaining cabinets will display the original image.

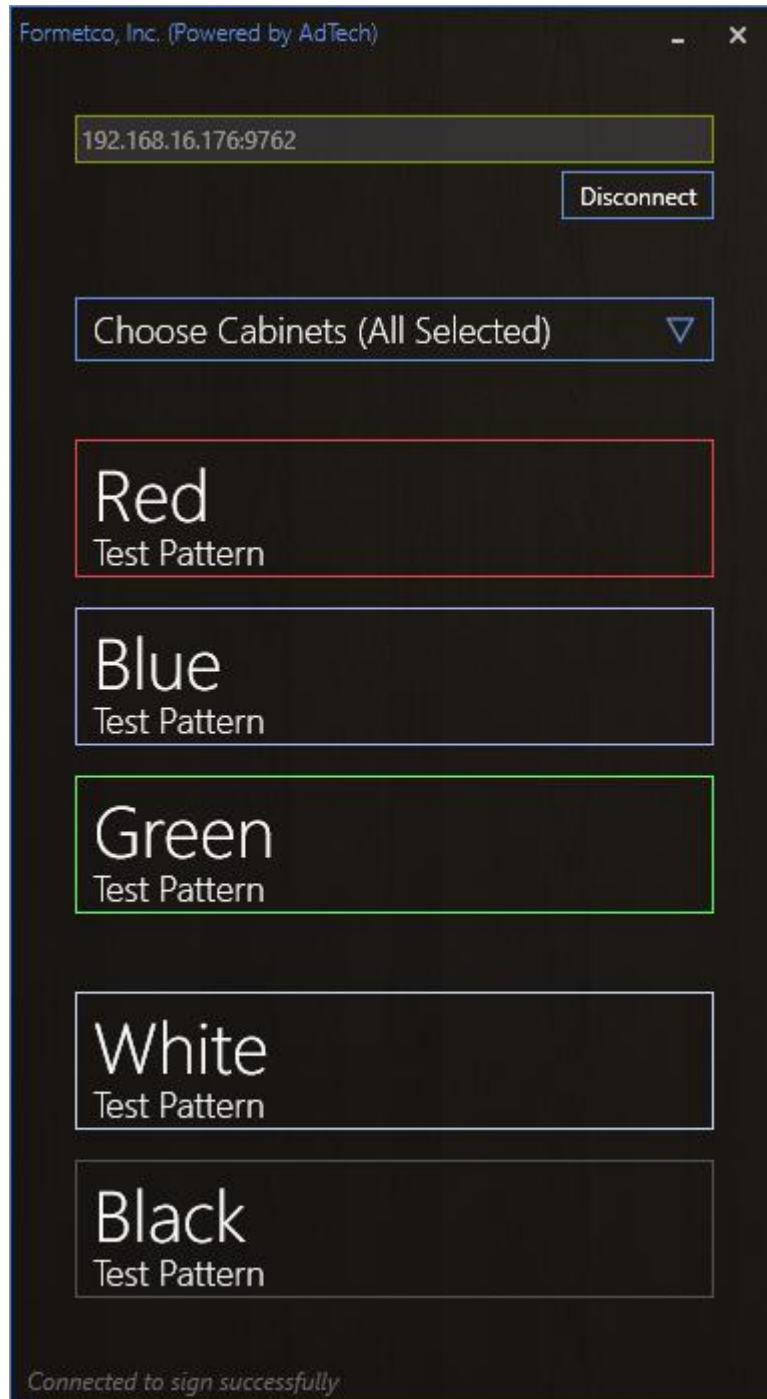


Image B

Ending a Test

To return the sign to its original image, click the **Disconnect** button at the top of the program underneath the IP Address. Closing Patterninator has the same effect.

Multiple Users

Multiple users testing on the same sign is not supported by Patterninator. Please use a single instance of Patterninator per sign during any given session.